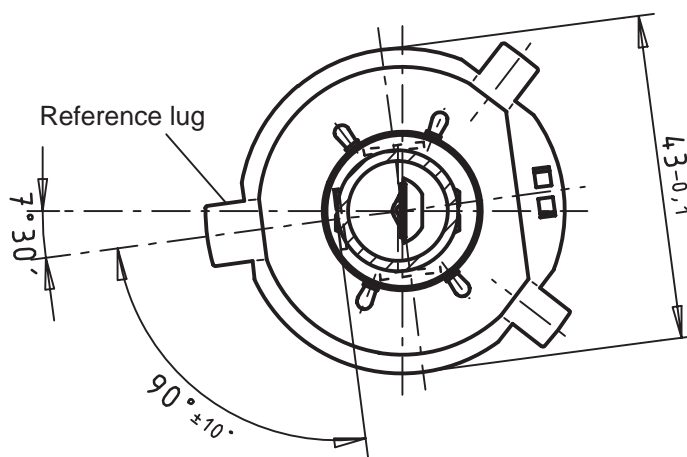
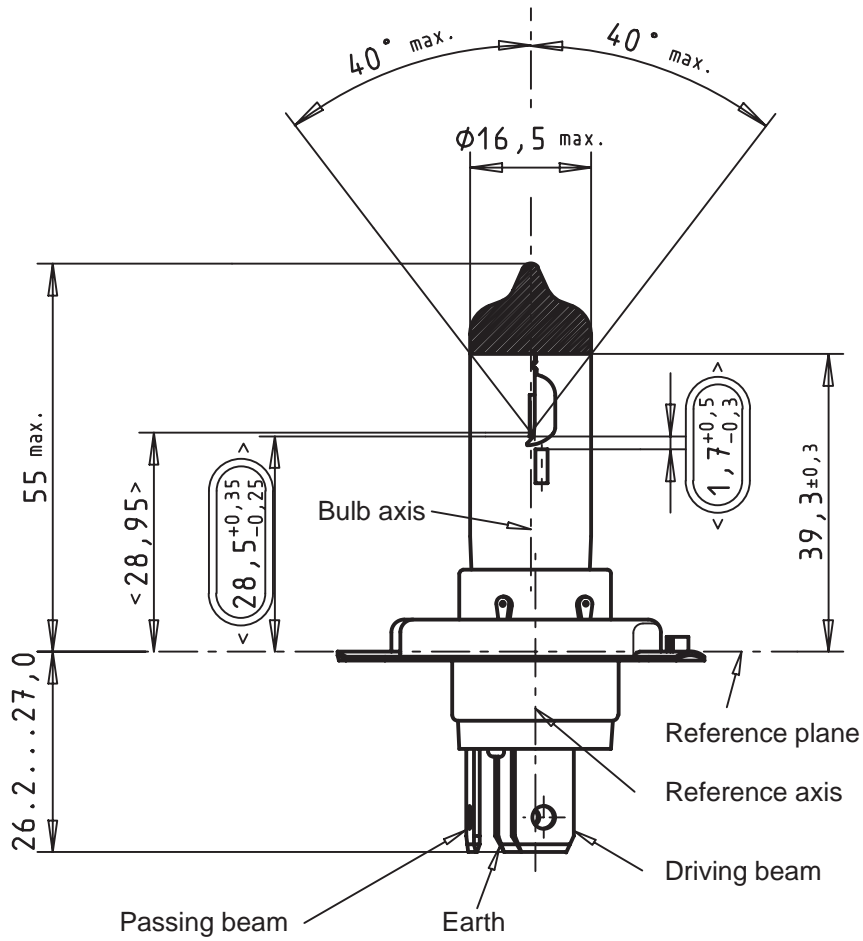



Scale 1 : 1

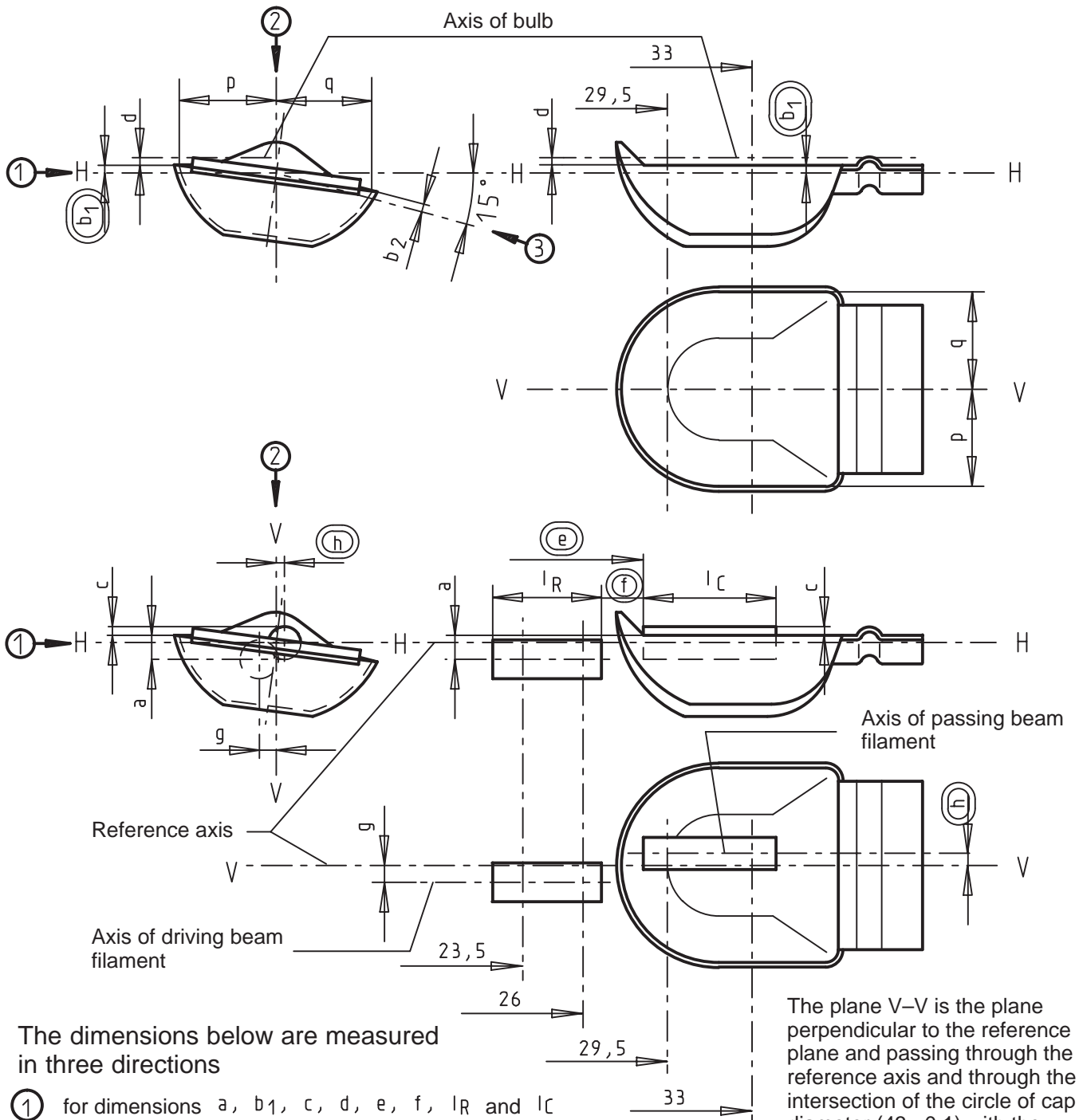


< > Standard characteristics

 Key characteristics

Substitute for:	14.09.99		W/QW-H Huber	Normung und Techn. Vorschriften
-----------------	----------	--	-----------------	------------------------------------


Position of filament, dimensions and tolerances



The dimensions below are measured in three directions

- ① for dimensions a, b₁, c, d, e, f, l_R and l_C
- ② for dimensions g, h, p, and q
- ③ for dimension b₂

The reference axis is the line perpendicular to the reference plane and passing through the centre of the circle of cap diameter (43 -0,1)

 Key characteristics

The plane V-V is the plane perpendicular to the reference plane and passing through the reference axis and through the intersection of the circle of cap diameter (43 -0,1) with the axis of the reference lug

Plane H-H is the plane perpendicular to both the reference plane and plane V-V and passing through the reference axis

OSRAM Customer Information	Automotive Halogen Headlamp H4 64193	CI 53.73.499
	12V 60/55W	us osr Page: 3(5)
Issue: 26.04.00	Status: valid	
Change: Revised according to note AMMK-M		Dimensions in mm

Inspected dimensions

Position of filaments, dimensions and tolerances

Reference/*	Dimension	Tolerances
a/26	0.8	± 0.35
a/23.5	0.8	± 0.60
(b₁/29.5)	0	± 0.30
b ₁ /33	b ₁ /29.5mv	± 0.30
b ₂ /29.5	0	± 0.30
b ₂ /33	b ₂ /29.5mv	± 0.30
c/29.5	0.6	± 0.35
c/33	c/29.5mv	± 0.35
d	min. 0.1	–
(e⁵⁾)	28.5	+ 0.35 / – 0.25
(f³⁾) 4), 6)	1.7	+ 0.50 / – 0.30
g/26	0	± 0.5
g/23.5	0	± 0.7
(h/29.5)	0	± 0.5
h/33	h/29.5mv	± 0.35
l _R 3), 6)	4.5	± 0.8
l _C 3), 4)	5.5	± 0.5
p/33	depends on the shape of the shield	–
q/33	$\frac{p+q}{2}$	± 0.6

Dimensions p and q are measured in a plane parallel to 33 mm from the reference plane.

Dimensions b₁, b₂, c and h are measured in planes parallel to and 29,5 mm and 33 mm away from the reference plane.

Dimensions a and g are measured in planes parallel to and 26,0 mm and 23,5 mm away from the reference plane.

Measuring at test voltage.

.../* : measured at the distance ... mm from the reference plane

.../29.5mV: measured at a distance of 29.5 mm from the reference plane

3) The end turns of the filament are defined as being the first luminous turn and the last luminous turn that are at substantially and correct helix angle.

4) For the passing beam filament the points to be measured are the intersection, seen in direction ①, of the lateral edge of the shield with the outside of the end turns.

5) 'e' denotes the distance from the reference plane to the beginning of the passing beam filament.

6) For the driving beam filament the points to be measured are the intersections of a plane, parallel to plane H–H and situated at a distance of 0.8 mm below it, with the end turns.



Key characteristics

Substitute for:	14.09.99		W/QW-H Huber	Normung und Techn. Vorschriften
-----------------	----------	--	-----------------	------------------------------------

OSRAM Customer Information	Automotive Halogen Headlamp H4 64193	CI 53.73.499
	12V 60/55W	us osr Page: 4(5)
Issue: 26.04.00	Status: valid	
Change: Revised according to note AMMK-M		Dimensions in mm

1 **STANDARDS AND REGULATIONS**

2 IEC-Publ. 810 IEC 809
3 ECE-Regl. Nr.37, category H4 Approval number (E1) 00801

6 **ELECTRICAL AND PHOTOMETRICAL DATA**

7 **Characteristics**

		Driving beam	Passing beam
8 Voltage	U	V 13,2	13,2
9 Current	I	mA	
10 Wattage	P	W 75 max.	68 max.
11 Initial luminous flux	Φ	lm 1650 \pm 15 %	1000 \pm 15 %
12 Lumen maintenance	Φ/Φ_0	% 85 min. after 150 h	85 min. after 300 h

15 **LIFE TIME**

16 Burning position: free
17 Switching cycle (2:1): Passing beam 15 h ON; 45 min OFF; Driving beam 7,5 h ON; 45 min OFF
18 Running voltage 13,2 V

	Driving beam	Passing beam
19 B_3	250 h	400 h
20 T_c	500 h	900 h

23 **Further Specifications**

	Rated value	Test specification
24 WBR test	> 20 h	IEC 810
25 Over voltage test	> 17 V \pm 0,1 V	CDC
26 Impact test	> 1000 cycles	CDC
27 Deflection test	max. 0,13 mm	SAE J1383
28 UV radiation	k1 = max. 2E-4 W/lm	ECE R37
29	k2 = max. 2E-6 W/lm	ECE R37

32 **Operating conditions**

33 Maximum permissible temperature: Bulb 650 °C
34 Fixring * 400 °C
35 Pinch 400 °C
36 * Measuring point: at the fixring flap

39 **Used materials**

40 Bulb: Hard glass
41 Cap: P43t-38
42 Filling pressure: 4,3 bar

Substitute for:	14.09.99		W/QW-H Huber	Normung und Techn. Vorschriften
-----------------	----------	--	-----------------	------------------------------------

OSRAM Customer Information	Automotive Halogen Headlamp H4 64193	CI 53.73.499
	12V 60/55W	us osr Page: 5(5)
Issue: 26.04.00	Status: valid	
Change: Revised according to note AMMK-M		Dimensions in mm

Successive listing of changes

Issue:	Reason for change:
29.05.98	First edition
14.09.99	ÄA 0200306/99, Life time
26.04.00	Remark added according to note AMMK-M from 24.02.00

In case of different interpretation the fundamental text of the German origin Customer Information KI 53.73.499 from 26.04.00 must be used.

- Subject to change without notice. Errors and omissions excepted.

Substitute for:	14.09.99		W/QW-H Huber	Normung und Techn. Vorschriften
-----------------	----------	--	-----------------	------------------------------------