



ASL : Area Site Lighter

Replaces standard HID area light fixtures with up to 60% energy savings and 3x-5x the life



LitespanLED® Area Site Lighters are a great alternative to existing 250W and 400W HID fixtures.

- Available in two outputs:
 - 10,000lm (replaces 250W HID)
 - 15,000lm (replaces 400W HID)
- Replaces standard HID area light fixtures with up to 60% energy savings and 3x-5x lifetime of HID
- Rotatable glass optics provide Type III or Type V beam distribution
- Choice of 4000K or 5000K
- Choice of adjustable slipfitter or square pole mounting arms available as adder
- Durable die cast aluminum housing with powder coat bronze finish
- Optional 347V step down transformer adder
- Perfect for parking areas, auto dealerships, roadways, campuses, streetscapes, & airports

energy savings : LED vs HID amounts reflect annual savings per fixture

| 100W LED vs 250W HID (283 system watts) | | | |
|---|-----------|------------|------------|
| 183 watts saved | | | |
| \$/KwH rate | 8 hrs/day | 10 hrs/day | 12 hrs/day |
| \$0.08 | \$42 | \$53 | \$60 |
| \$0.10 | \$53 | \$65 | \$80 |
| \$0.12 | \$64 | \$80 | \$95 |
| \$0.14 | \$93 | \$93 | \$104 |

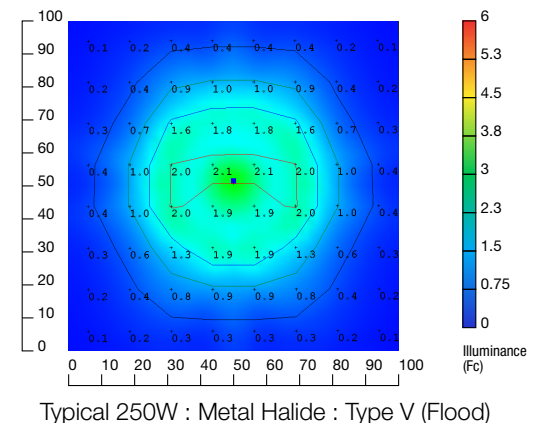
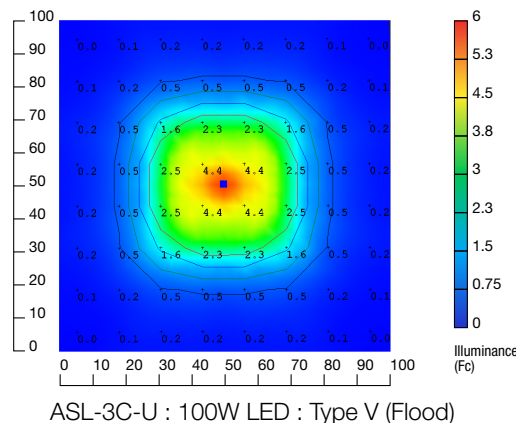
| 150W LED vs 400W HID (460 system watts) | | | |
|---|-----------|------------|------------|
| 310 watts saved | | | |
| \$/KwH rate | 8 hrs/day | 10 hrs/day | 12 hrs/day |
| \$0.08 | \$71 | \$89 | \$108 |
| \$0.10 | \$90 | \$111 | \$136 |
| \$0.12 | \$108 | \$136 | \$161 |
| \$0.14 | \$127 | \$151 | \$189 |

photometrics : LED vs HID (Photometrics simulate fixtures installed on 20ft. pole.)

ASL Fixtures feature precision optics which allow for superior light control when compared to HID.

Isolines:

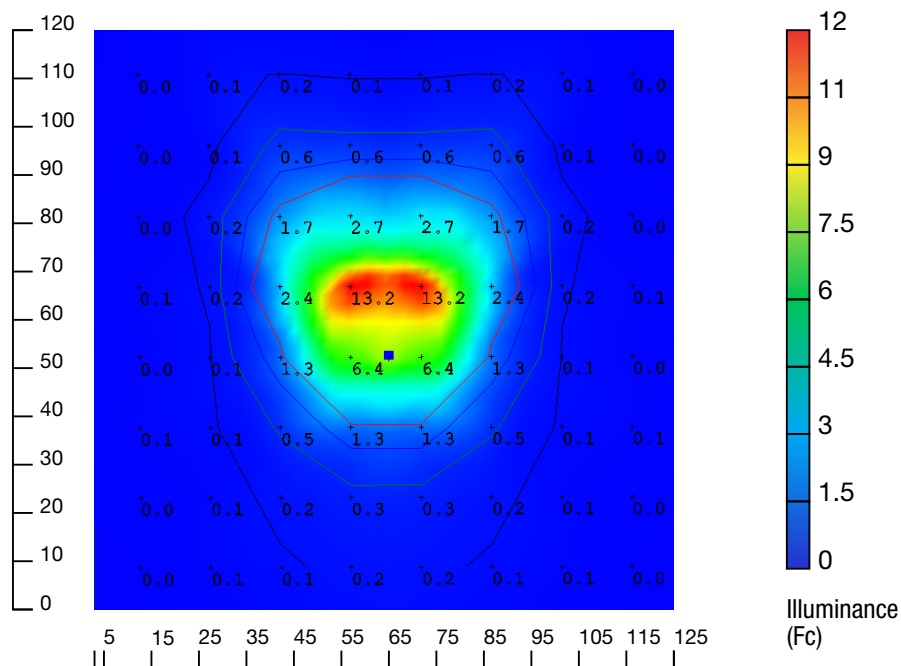
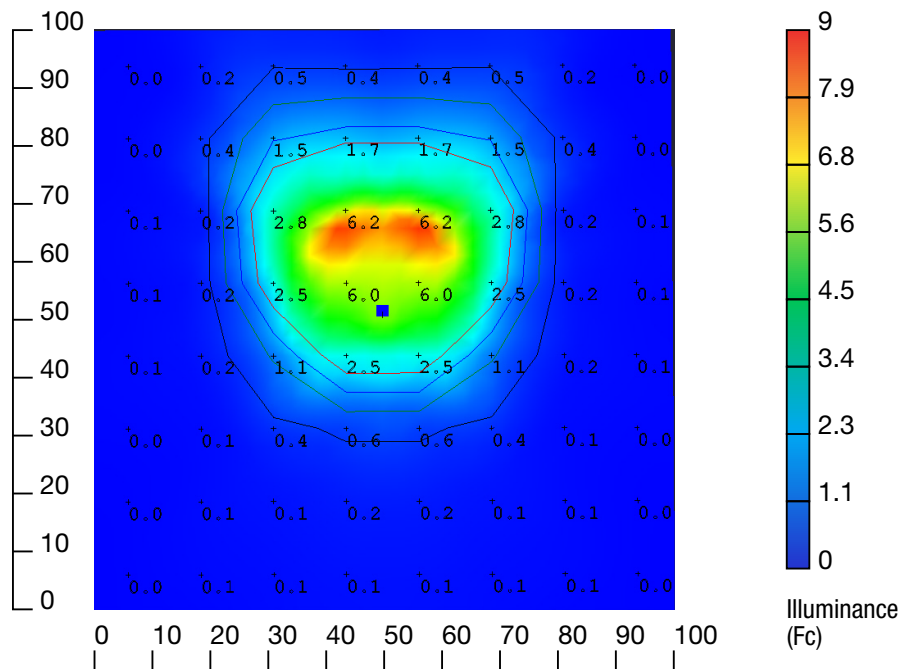
Red = 2fc
Blue = 1.5fc
Green = 1fc
Black = 0.5fc

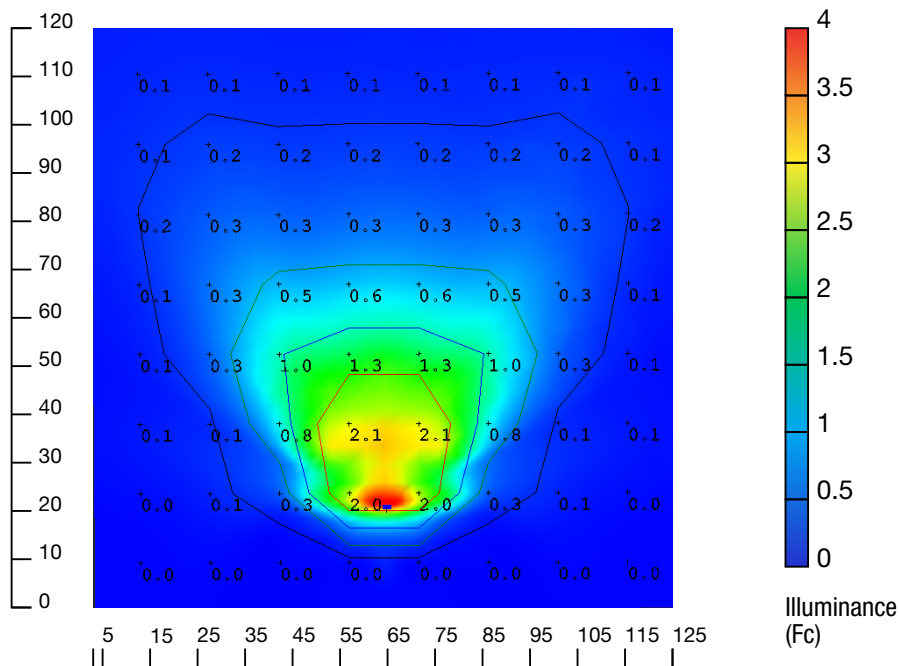
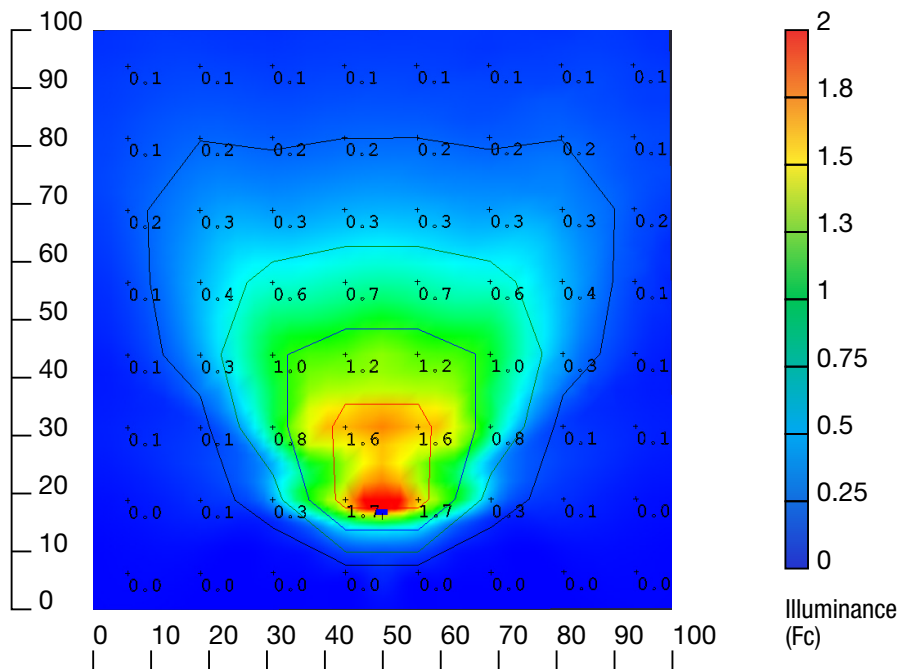


beam distribution : type III, 0° tilt

IES Type III is meant to be located on the perimeter of an area, projecting light outward to fill the area. Ideal for:

- roadways
- general parking areas
- Lighting applications where a large pool of light is required
- tilt fixture for longer forward throw



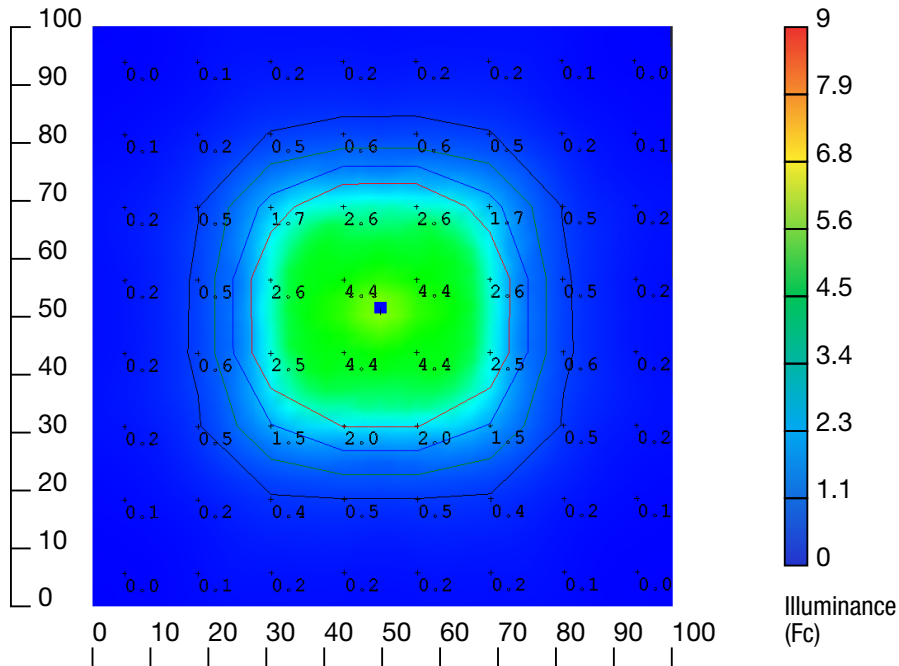


(Photometrics simulate fixtures installed on 20ft. pole.)

beam distribution : type V, 0° tilt

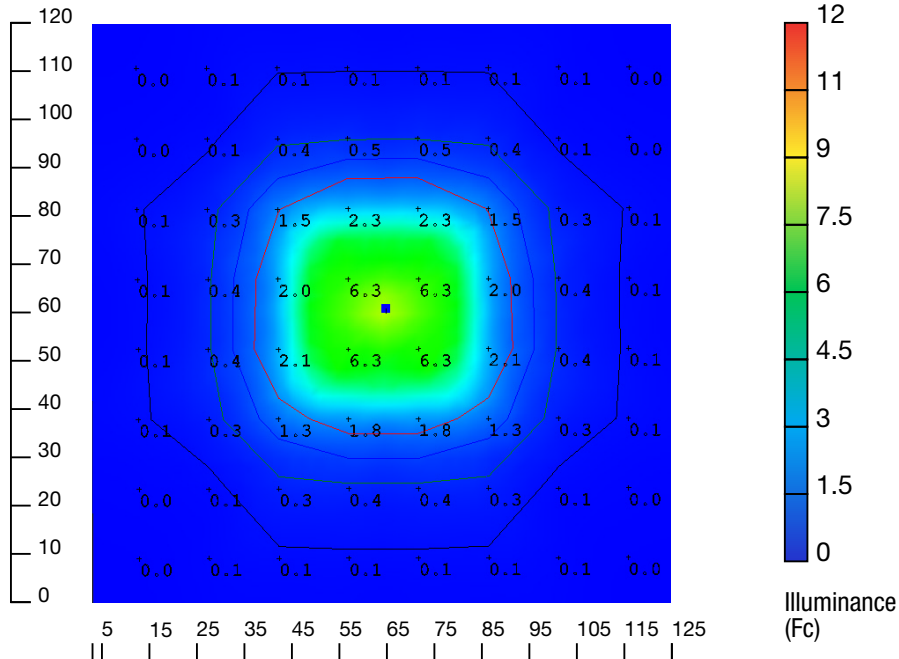
IES Type V produces a circular distribution that has the same intensity at all angles. Ideal for:

· center of roadways · intersections · center islands of parkways · parking lots



ASL-3C-U:

100W Type V
Mounted at 20 ft,
0° tilt



ASL-5C-U:

150W Type V
Mounted at 20 ft,
0° tilt



watch > like > follow



23220 W. 84th St, Shawnee, KS 66227 · (P) 1.800.852.2217 (F) 1.800.492.8975
Canada: 81 King St, Barrie, ON L4N 6B5 · (P) 1.888.410.8151 (F) 1.888.705.1335